

KIT BARENATURA

1/04 - 30/06/2026



SORMA | IT
INDEXABLE TOOLS - NIKKO

**Selezione di utensili e inserti
per barenatura.
Ogni kit comprende 1 utensile
e 10 inserti.**

CARATTERISTICHE PRINCIPALI E VANTAGGI

Utensili premium in metallo duro



- Sporgenza fino a 7xD;
- Extra robusta, brasatura a forma di "V";
- Precisione più elevata e vita utensile migliorata.

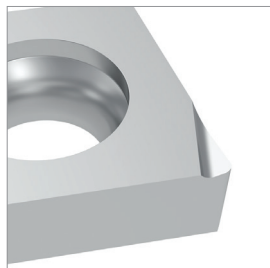
Utensili anti vibrazioni Vortex



- Evacuazione dei trucioli ottimizzata;
- Acciaio speciale anti-vibrazione fino a 5xD;
- Intera gamma con refrigerazione interna.

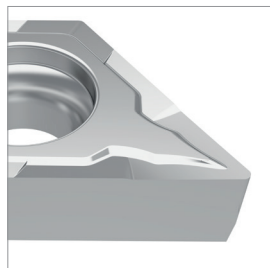
PPF (micro)

- Gole rettificate
- Taglio super dolce



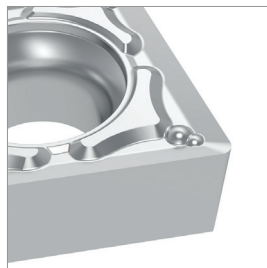
PPU (rettificato)

- Media asportazione
- Taglio continuo/interrotto



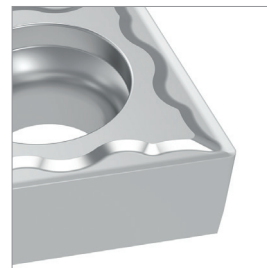
PFU (stampato)

- Taglio dolce








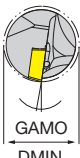


PMU (stampato)

- General purpose










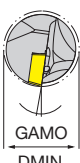


KIT BARENATURA MICRO

| MCC+MD |  INTERNAL COOLANT 7xD |  GAMO DMIN |  Gole rettificate, superfinitura |  |
|-------------|---|--|--|---|
| Codice KIT | 1 pz. barra metallo duro | Dmin | 10 pz. MCC.R__ | Prezzo KIT |
| KIT-MCC-E01 | NT-E04G-MICRO-CC-RH | 5 | MCC.R02L-PPF JP5125 | € 201,00 |
| KIT-MCC-E02 | NT-E04G-MICRO-CC-RH | 5 | MCC.R04L-PPF JP5125 | € 201,00 |
| KIT-MCC-E03 | NT-E05H-MICRO-CC-RH | 6 | MCC.R02L-PPF JP5125 | € 201,00 |
| KIT-MCC-E04 | NT-E05H-MICRO-CC-RH | 6 | MCC.R04L-PPF JP5125 | € 201,00 |



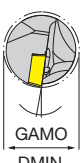
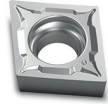

| MCC+ Vortex |  INTERNAL COOLANT 5xD |  GAMO DMIN |  Gole rettificate, superfinitura |  |
|-------------|---|--|--|---|
| Codice KIT | 1 pz. barra Vortex | Dmin | 10 pz. MCC.R__ | Prezzo KIT |
| KIT-MCC-V01 | NT-V10H-MICRO-CC-RH-05 | 5 | MCC.R02L-PPF JP5125 | € 176,90 |
| KIT-MCC-V02 | NT-V10H-MICRO-CC-RH-05 | 5 | MCC.R04L-PPF JP5125 | € 176,90 |
| KIT-MCC-V03 | NT-V10H-MICRO-CC-RH-06 | 6 | MCC.R02L-PPF JP5125 | € 176,90 |
| KIT-MCC-V04 | NT-V10H-MICRO-CC-RH-06 | 6 | MCC.R04L-PPF JP5125 | € 176,90 |





KIT BARENATURA





| | | | | | | | | | |
|-----------------------|--|---|---|---|-------------------|---------------------------|-------------|------------------------|-------------------|
| TB+ Vortex |   |  |  Gole rettificate, superfinitura |  | | | | | |
| | | | | | Codice KIT | 1 pz. barra Vortex | Dmin | 10 pz. MCC.R__ | Prezzo KIT |
| | | | | | KIT-MTB-V01 | NT-V10H-STLBR06-07 | 7 | TBET060102L-PPF JP5125 | € 175,20 |
| | | | | | KIT-MTB-V02 | NT-V10H-STLBR06-07 | 7 | TBET060104L-PPF JP5125 | € 175,20 |
| | | | | | KIT-MTB-V03 | NT-V10H-STLBR06-08 | 8 | TBET060102L-PPF JP5125 | € 175,20 |
| KIT-MTB-V04 | NT-V10H-STLBR06-08 | 8 | TBET060104L-PPF JP5125 | € 175,20 | | | | | |

| | | | | | | | | | |
|-----------------------|--|---|---|---|-------------------|---------------------------|-------------|------------------------|-------------------|
| WB+ Vortex |   |  |  Gole rettificate, superfinitura |  | | | | | |
| | | | | | Codice KIT | 1 pz. barra Vortex | Dmin | 10 pz. MCC.R__ | Prezzo KIT |
| | | | | | KIT-MWB-V01 | NT-V10H-SWUBR06-06 | 6 | WBET060102L-PPF JP5125 | € 175,20 |
| | | | | | KIT-MWB-V02 | NT-V10H-SWUBR06-06 | 6 | WBET060104L-PPF JP5125 | € 175,20 |
| | | | | | KIT-MWB-V03 | NT-V10H-SWUBR06-07 | 7 | WBET060102L-PPF JP5125 | € 175,20 |
| KIT-MWB-V04 | NT-V10H-SWUBR06-07 | 7 | WBET060104L-PPF JP5125 | € 175,20 | | | | | |

KIT BARENATURA GENERAL PURPOSE

| | | | | | | | | | |
|----------------------|--|---|--|---|-------------------|--------------------------------|-------------|------------------------------|-------------------|
| CC06 + MD |   |  |  rettificato PPU - taglio continuo/interrotto |  | | | | | |
| | | | | | Codice KIT | 1 pz barra metallo duro | Dmin | 10 pz CC...060202-PPU | Prezzo KIT |
| | | | | | KIT-PPU-E01 | NT-E08K-SCLCL06 | 10 | CCGT060202-PPU JP5125 | € 196,50 |
| | | | | | KIT-PPU-E02 | NT-E08K-SCLCR06 | 10 | CCGT060202-PPU JP5125 | € 196,50 |
| | | | | | KIT-PPU-E03 | NT-E10K-SCLCL06 | 12 | CCGT060202-PPU JP5125 | € 206,80 |
| | | | | | KIT-PPU-E04 | NT-E10K-SCLCR06 | 12 | CCGT060202-PPU JP5125 | € 206,80 |
| | | | | | KIT-PPU-E05 | NT-E12M-SCLCL06 | 14 | CCGT060202-PPU JP5125 | € 224,10 |
| | | | | | KIT-PPU-E06 | NT-E12M-SCLCR06 | 14 | CCGT060202-PPU JP5125 | € 224,10 |
| | | | | | | 1 pz barra metallo duro | | 10 pz CC...060204-PPU | |
| | | | | | KIT-PPU-E07 | NT-E08K-SCLCL06 | 10 | CCGT060204-PPU JP5125 | € 196,50 |
| | | | | | KIT-PPU-E08 | NT-E08K-SCLCR06 | 10 | CCGT060204-PPU JP5125 | € 196,50 |
| | | | | | KIT-PPU-E09 | NT-E10K-SCLCL06 | 12 | CCGT060204-PPU JP5125 | € 206,80 |
| | | | | | KIT-PPU-E10 | NT-E10K-SCLCR06 | 12 | CCGT060204-PPU JP5125 | € 206,80 |
| KIT-PPU-E11 | NT-E12M-SCLCL06 | 14 | CCGT060204-PPU JP5125 | € 224,10 | | | | | |
| KIT-PPU-E12 | NT-E12M-SCLCR06 | 14 | CCGT060204-PPU JP5125 | € 224,10 | | | | | |

| <div style="display: flex; justify-content: space-between; align-items: center;"> <div style="text-align: left;"> <p>CC06 + VORTEX</p> </div> <div style="text-align: center;">  </div> <div style="text-align: center;">  </div> <div style="text-align: center;">  <p>stampato PFU - taglio dolce PMU - universale</p> </div> <div style="text-align: center;">  </div> </div> | | | | |
|--|--------------------|------|-----------------------|------------|
| Codice KIT | 1 pz barra Vortex | Dmin | 10 pz CC...060204-PFU | Prezzo KIT |
| KIT-PFU-V01 | NT-V08H-SCLCL06-10 | 10 | CCMT060204-PFU JP5125 | € 117,00 |
| KIT-PFU-V02 | NT-V08H-SCLCR06-10 | 10 | CCMT060204-PFU JP5125 | € 117,00 |
| KIT-PFU-V03 | NT-V10K-SCLCL06-12 | 12 | CCMT060204-PFU JP5125 | € 120,70 |
| KIT-PFU-V04 | NT-V10K-SCLCR06-12 | 12 | CCMT060204-PFU JP5125 | € 120,70 |
| KIT-PFU-V05 | NT-V12M-SCLCL06-14 | 14 | CCMT060204-PFU JP5125 | € 132,10 |
| KIT-PFU-V06 | NT-V12M-SCLCR06-14 | 14 | CCMT060204-PFU JP5125 | € 132,10 |
| | 1 pz barra Vortex | | 10 pz CC...060204-PMU | |
| KIT-PMU-V01 | NT-V08H-SCLCL06-10 | 10 | CCMT060204-PMU JP5125 | € 117,00 |
| KIT-PMU-V02 | NT-V08H-SCLCR06-10 | 10 | CCMT060204-PMU JP5125 | € 117,00 |
| KIT-PMU-V03 | NT-V10K-SCLCL06-12 | 12 | CCMT060204-PMU JP5125 | € 120,70 |
| KIT-PMU-V04 | NT-V10K-SCLCR06-12 | 12 | CCMT060204-PMU JP5125 | € 120,70 |
| KIT-PMU-V05 | NT-V12M-SCLCL06-14 | 14 | CCMT060204-PMU JP5125 | € 132,10 |
| KIT-PMU-V06 | NT-V12M-SCLCR06-14 | 14 | CCMT060204-PMU JP5125 | € 132,10 |

| <div style="display: flex; justify-content: space-between; align-items: center;"> <div style="text-align: left;"> <p>CC09 + VORTEX</p> </div> <div style="text-align: center;">  </div> <div style="text-align: center;">  </div> <div style="text-align: center;">  <p>stampato PFU - taglio dolce PMU - universale</p> </div> <div style="text-align: center;">  </div> </div> | | | | |
|--|--------------------|------|-----------------------|------------|
| Codice KIT | 1 pz barra Vortex | Dmin | 10 pz CC...090204-PFU | Prezzo KIT |
| KIT-PFU-V07 | NT-V12M-SCLCL09-14 | 14 | CCMT09T304-PFU JP5125 | € 137,20 |
| KIT-PFU-V08 | NT-V12M-SCLCR09-14 | 14 | CCMT09T304-PFU JP5125 | € 137,20 |
| KIT-PFU-V09 | NT-V16Q-SCLCL09-18 | 18 | CCMT09T304-PFU JP5125 | € 155,70 |
| KIT-PFU-V10 | NT-V16Q-SCLCR09-18 | 18 | CCMT09T304-PFU JP5125 | € 155,70 |
| | 1 pz barra Vortex | | 10 pz CC...090204-PMU | |
| KIT-PMU-V07 | NT-V12M-SCLCL09-14 | 14 | CCMT09T304-PMU JP5125 | € 137,20 |
| KIT-PMU-V08 | NT-V12M-SCLCR09-14 | 14 | CCMT09T304-PMU JP5125 | € 137,20 |
| KIT-PMU-V09 | NT-V16Q-SCLCL09-18 | 18 | CCMT09T304-PMU JP5125 | € 155,70 |
| KIT-PMU-V10 | NT-V16Q-SCLCR09-18 | 18 | CCMT09T304-PMU JP5125 | € 155,70 |