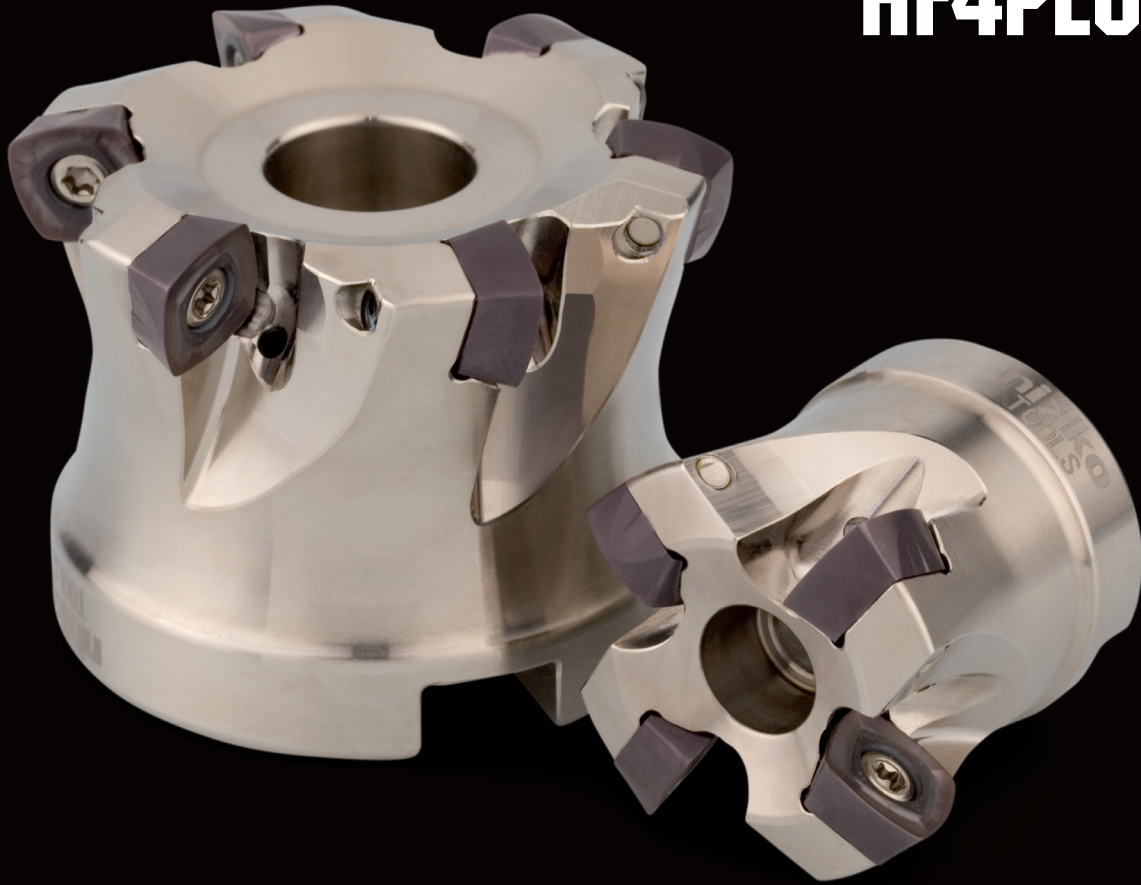


**HF4PLUS** 



**SPECIAL**  
**KIT Action**

**Fresatura ad alto avanzamento  
per lavorazioni affidabili**

**nixko**TOOLS  
SORMA CUTTING SOLUTIONS

**uemme**  
TOOLS and EQUIPMENT

# HF4PLUS

**nikko**TOOLS  
SORMA CUTTING SOLUTIONS

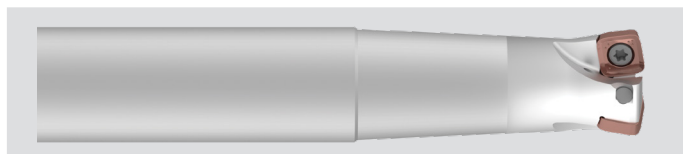
**SPECIAL  
KIT**



**569,00**  
euro

## Prova HF4Plus!

Ogni kit include 4 corpi fresa e 20 inserti



1 x NT-SP07HF D020-S20-Z3  
1 x NT-SP07HF D025-S25-Z4  
1 x NT-SP07HF D032-S32-Z5

INTERNAL  
COOLANT



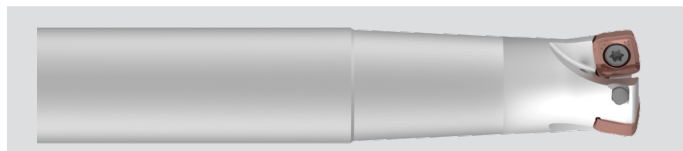
1 x NT-SP07HF D040-F16-Z6

INTERNAL  
COOLANT



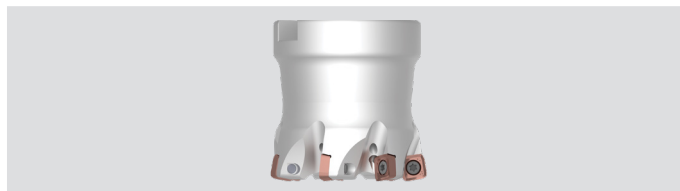
20 x SPMT07T210R-GP JP8725

KIT-HF4PLUS01



1 x NT-SP07HF D020-S20-Z3  
1 x NT-SP07HF D025-S25-Z4  
1 x NT-SP07HF D032-S32-Z5

INTERNAL  
COOLANT



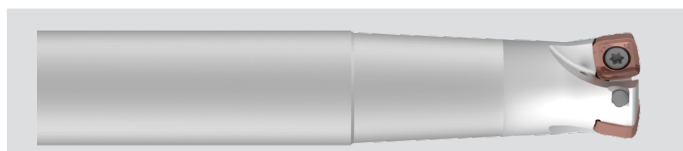
1 x NT-SP07HF D050-F22-Z7

INTERNAL  
COOLANT



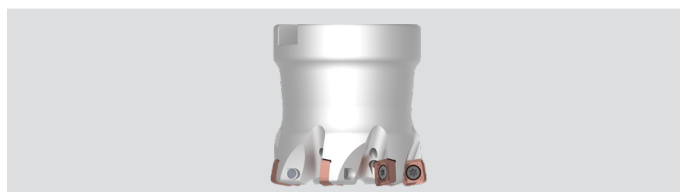
20 x SPMT07T210R-GP JP8725

KIT-HF4PLUS02



1 x NT-SP07HF D020-S20-Z3  
1 x NT-SP07HF D025-S25-Z4  
1 x NT-SP07HF D032-S32-Z5

INTERNAL  
COOLANT



1 x NT-SP07HF D052-F22-Z7

INTERNAL  
COOLANT



20 x SPMT07T210R-GP JP8725

KIT-HF4PLUS03

# HF4PLUS

**nikko**TOOLS  
SORMA CUTTING SOLUTIONS

**SPECIAL  
KIT**



**399,00**  
euro

## Prova HF4Plus!

Ogni kit include 2 corpi fresa e 20 inserti



1 x NT-SD10HF D050-F22-Z6  
1 x NT-SD10HF D063-F27-Z7

INTERNAL  
COOLANT



20 x SDMT100410R-GP JP8725

KIT-HF4PLUS04



1 x NT-SD10HF D052-F22-Z6  
1 x NT-SD10HF D066-F27-Z7

INTERNAL  
COOLANT



20 x SDMT100410R-GP JP8725

KIT-HF4PLUS05

## Perché scegliere HF4Plus?

- Fresatura alto avanzamento: riduzione dei tempi di lavoro e maggiore efficienza
- Semi-finitura o sgrossatura, profilatura e contornatura, rampa, esecuzione di tasche
- Per applicazioni su materiali ISO **P M K S**
- Design tagliente multi-curva, robusto e affidabile
- Corpi fresa disponibili da  $\varnothing$  20 a  $\varnothing$  125 mm



**uemme s.r.l.**

Viale Lavoro e Industria  
25030 Coccaglio (BS)  
ITALIA

**info**

T | +39 030 7700112  
M | Info@uemme.eu  
S | www.uemme.eu

Scansiona  
il Qr code

scopri il mondo  
uemme

